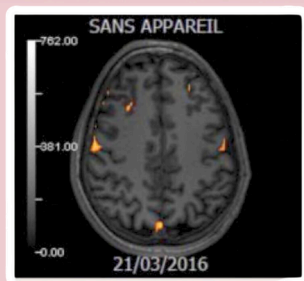
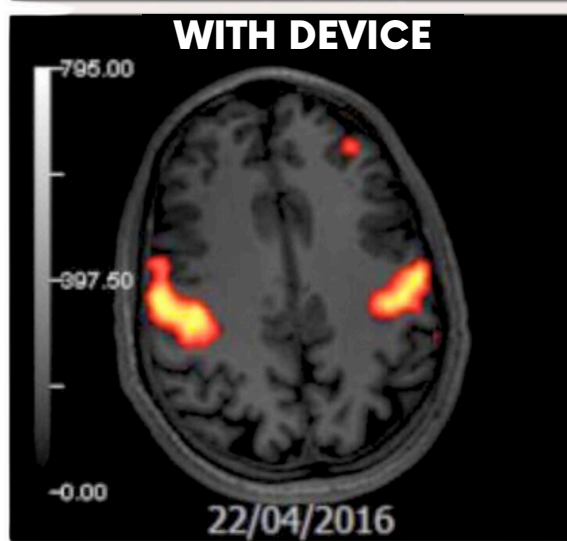
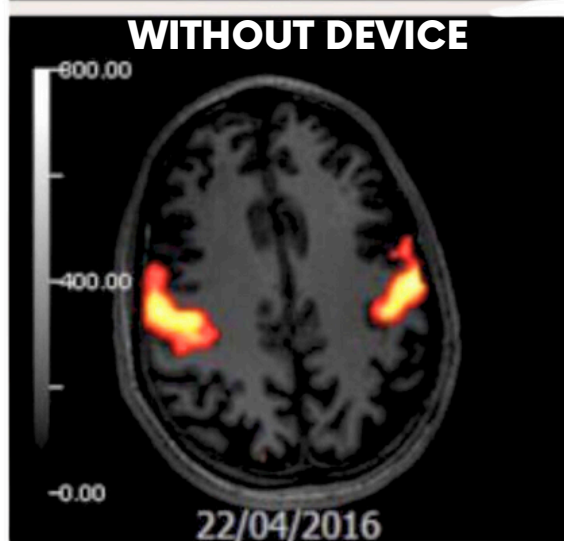
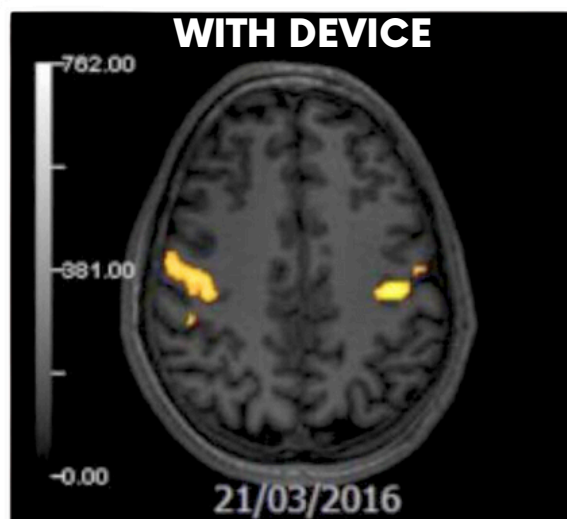


STUDY ON NEURONAL ACTIVATION WITH FROGGYMOUTH

Dr. Tshibanda and Dr. Pans
University Hospital of Liège



THESE MRI SCANS DEMONSTRATE THE NEURONAL ACTIVATION OF THE SENSORIMOTOR AREAS INVOLVED IN SECONDARY SWALLOWING IN A 35-YEAR-OLD PATIENT TREATED WITH FROGGYMOUTH.



TO THE PATIENT HAD NEVER WORN FROGGYMOUTH BEFORE. AS SOON AS THE DEVICE IS WORN, AN IMMEDIATE REACTION IS OBSERVED IN THE SENSORIMOTOR AREAS.

T1 ONE MONTH LATER, THE SENSORIMOTOR AREAS HAVE BEEN STIMULATED, AND THE ACTIVATION OF THESE AREAS IS SIMILAR BOTH WITH AND WITHOUT THE DEVICE: SWALLOWING IS ACQUIRED.



FROGGYMOUTH